

June 24, 2010 NEWS

Contact: NRCS – Greg Igl, District Conservationist, 262-723-3216 greg.igl@wi.usda.gov
KMLT – Maggie Zoellner, 262-949-7211 maggie@kmlandtrust.org

Map of Walworth County MRBI Project - <ftp://ftp-fc.sc.gov.usda.gov/WI/eqip/maps/KMLTMRBI.pdf> 3mb

Delavan Lake Watershed Selected for USDA Healthy Watershed Initiative

Madison, Wis..... Two key watersheds, Delavan Lake and Jackson Creek, will be the focus of an intense agricultural conservation effort in Walworth County for the next three years.

The Kettle Moraine Land Trust applied for special funding through the USDA Upper Mississippi River Basin Healthy Watersheds Initiative, and will received \$200,000 for farmland conservation practices to reduce nutrients and sediment flowing to Lake Delavan and the Upper Mississippi Basin.

“This Upper Mississippi initiative will help farmers voluntarily implement conservation and management practices that avoid, control and trap nutrient runoff from agricultural land. In all, 76 projects in 12 states are funded this year,” said Pat Leavenworth, State Conservationist for the USDA Natural Resources Conservation Service (NRCS) in Wisconsin.

According to Maggie Zoellner, Program Manager for the Kettle Moraine Land Trust, farmland conservation practices like grass waterways and vegetation corridors along streams improve water quality and also provide additional wildlife habitat. “With the support of the Delavan Lake community, and in particular the Delavan Lake Sanitary District, we are able to offer qualified farmers additional funding to offset the cost of implementing new practices and converting land to permanent vegetation .”

Helping People Help the Land

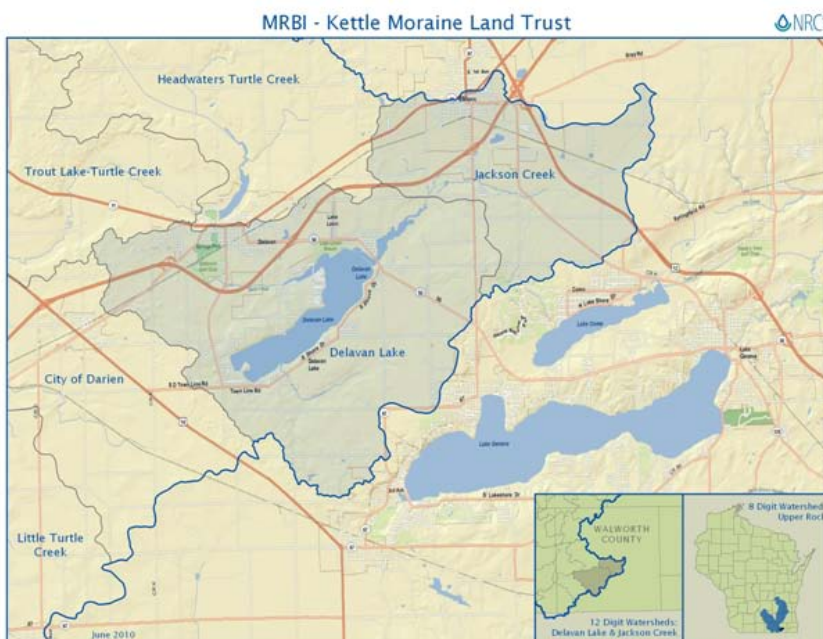
NEWS RELEASE

Farmers in these two watersheds may apply for cost-sharing through the USDA-NRCS. The funding is available through the Environmental Quality Incentives Program. Eligible conservation practices include nutrient management planning, grass waterways, buffer strips, crop residue management and other practices that trap sediment and reduce nutrient runoff.

Applications for 2010 funding must be complete by July 14.

Signups for 2011-2012 funding will be announced later.

For more information, visit www.wi.nrcs.usda.gov, or Maggie Zoellner, Kettle Moraine Land Trust, 262-949-7211, or Greg Igl, NRCS 262-723-3216.



The U.S. Department of Agriculture (USDA) prohibits discrimination in all its programs and activities on the basis of race, color, national origin, gender, religion, age, disability, political beliefs, sexual orientation, and marital or family status. (Not all prohibited bases apply to all programs.) Persons with disabilities who require alternative means for communication of program information (Braille, large print, audiotape, etc.) should contact USDA's TARGET Center at 202-720-2600 (voice and TDD). To file a complaint of discrimination, write USDA, Director, Office of Civil Rights, Room 326W, Whitten Building, 14th and Independence Avenue, SW, Washington, DC 20250-9410 or call (202) 720-5964 (voice or TDD). USDA is an equal opportunity provider and employer.